

# Edinburgh Complex Fluids Partnership

*Improving formulation and complex fluid design through scientific excellence.*

[www.edinburghcomplexfluids.com](http://www.edinburghcomplexfluids.com)

## Calls of interest:

NMP 25-2014/2015

**NMP 2-2015** Integration of Novel  
Nanomaterials into  
Existing Production  
Lines

NMP 3-2015

NMP 11-2015

NMP 12-2015

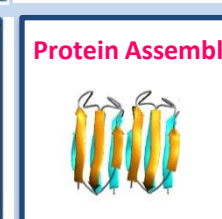
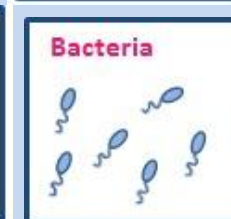
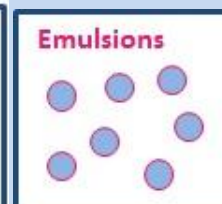
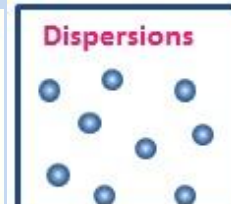
NMP 16-2015

NMP 22-2015

NMP 23-2015

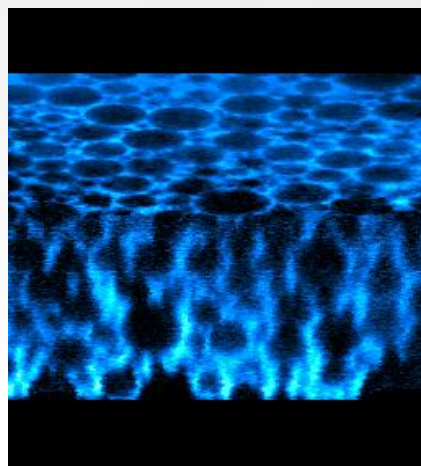
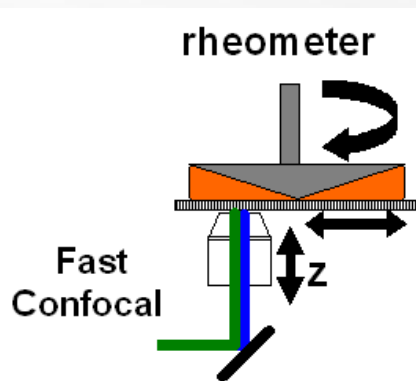
Specific interests see website or  
contact Tiffany / Joe for details

## Complex Fluid Research

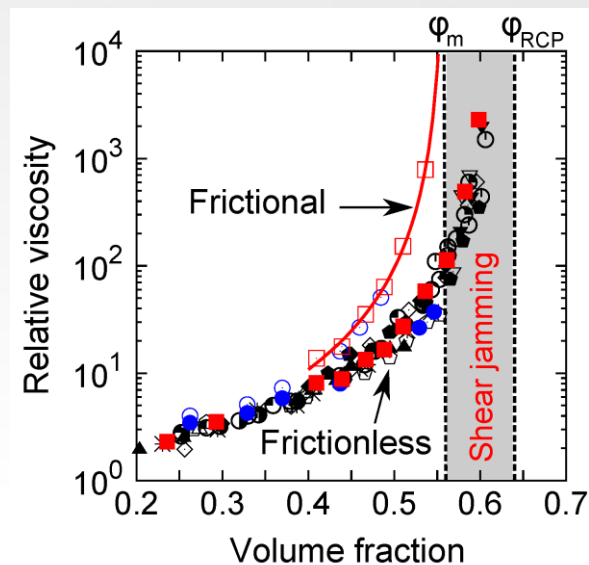


# Offer: Imaging microstructure under shear

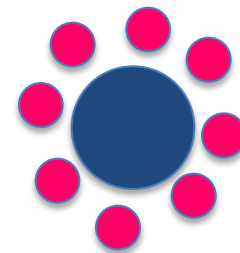
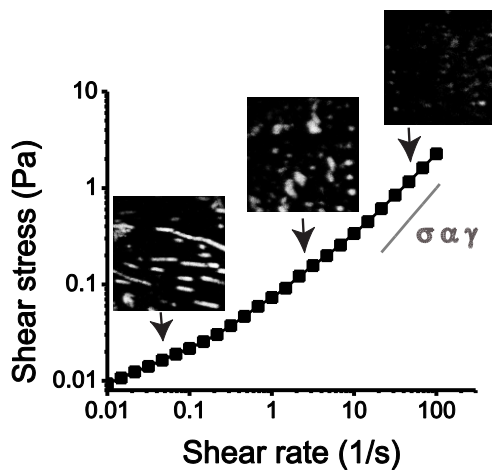
*Rheo-imaging: correlating rheology with structural change*



Concentrated colloid rheology



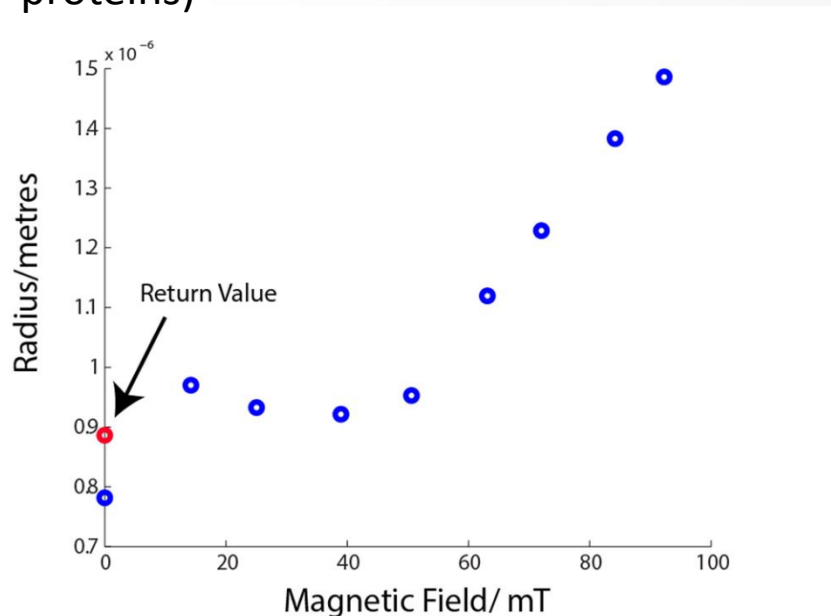
Nano-composites:  
Colloid structure in  
liquid crystal media



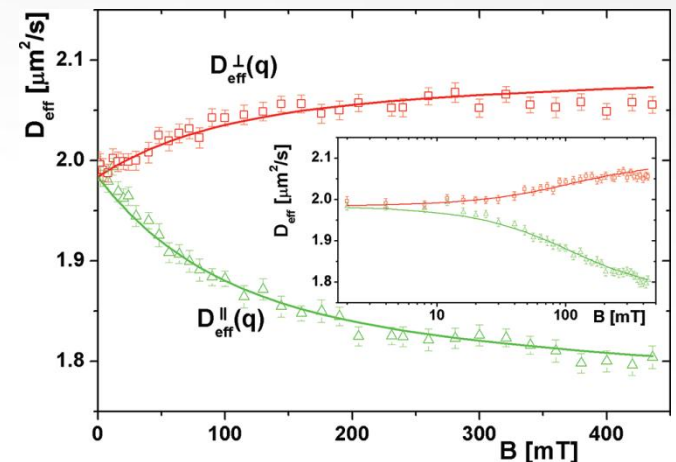
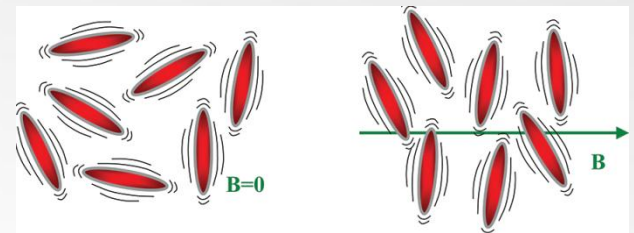
# Offer: Measurement of nanoparticles

*New technique for measuring nanoparticle size and orientation*

1) Measurement of nanoparticle and aggregate size (magnetic proteins)



2) Characterizing orientation



M. Reufer, Langmuir, 28, 4618 (2012)

# Edinburgh Complex Fluids Partnership

## *Example past projects*

- Understanding and improving the flow properties of products
- Tailoring novel microcapsules for delivery
- Understanding aggregation processes (proteins, colloids, polymers etc.)
- Measuring motility of microorganisms
- Novel routes to coating development
- Exploring novel composites and self-assembly

L'ORÉAL

syngenta



 **IPSEN**  
Innovation for patient care



AkzoNobel 

  
Johnson Matthey

ECFP 



THE UNIVERSITY of EDINBURGH

# Edinburgh Complex Fluids Partnership

## Contact:

Dr. Tiffany Wood: [tiffany.wood@ed.ac.uk](mailto:tiffany.wood@ed.ac.uk)

Dr. Joe Tovacoli: [j.tovacoli@ed.ac.uk](mailto:j.tovacoli@ed.ac.uk)

Also see [www.edinburghcomplexfluids.com](http://www.edinburghcomplexfluids.com)

Telephone: +44 (0) 131 650 7687